



*“He left the States 31 months ago. He was wounded in his first campaign. He has had tropical diseases. He half-sleeps at night and gouges Japs out of holes all day. Two-thirds of his company has been killed or wounded. He will return to attack this morning. How much can a human being endure?”*

An illustration of a 1st Marine Div. soldier outside Bloody Nose Ridge  
- Tom Lea, Artist/Journalist LIFE Magazine  
“The 2,000 Yard Stare”

Print Date: Oct. 2014

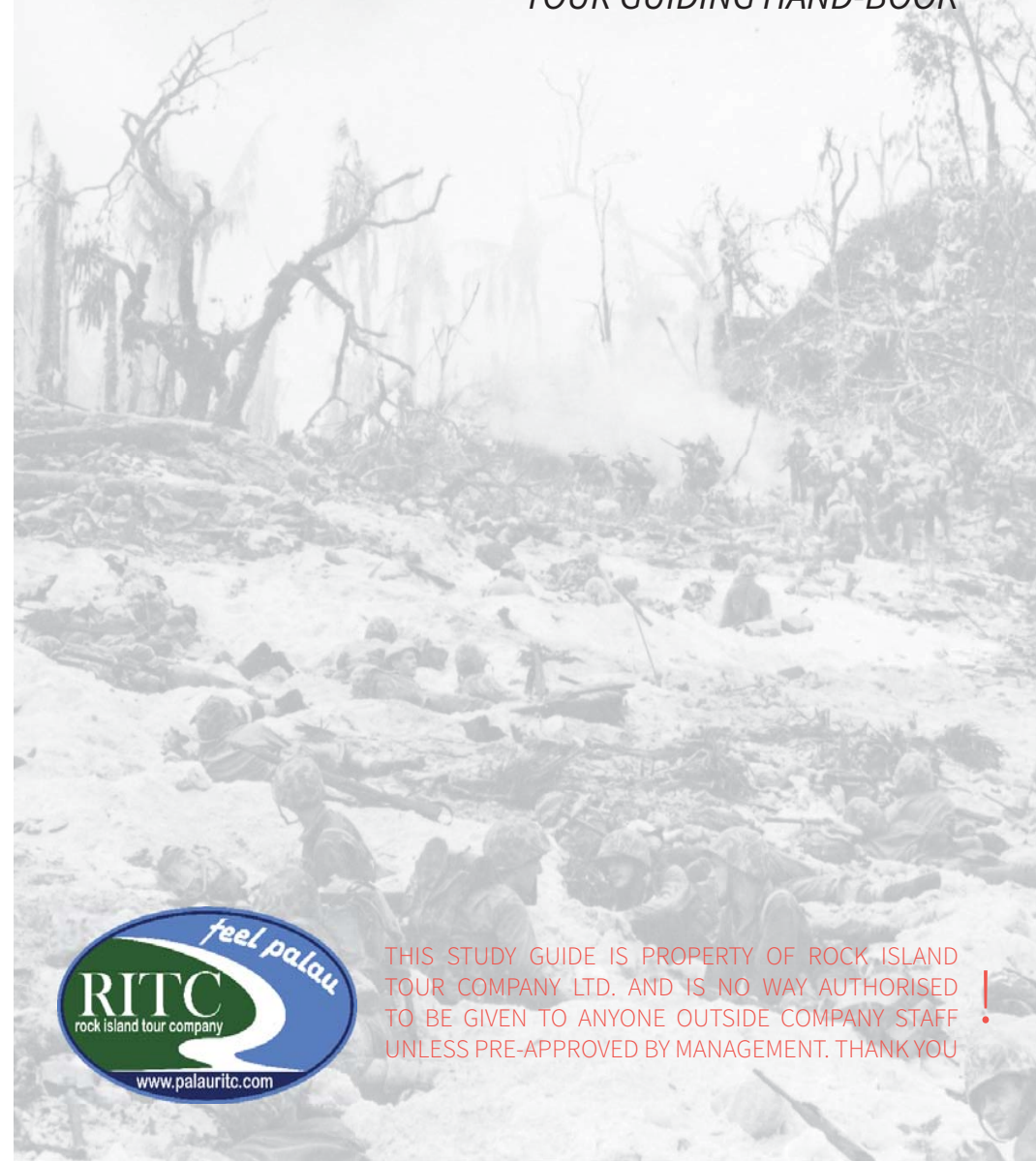


# PELELIU ISLAND HISTORICAL TOUR

ENGLISH  
TOUR GUIDING HAND-BOOK

# PELELIU ISLAND HISTORICAL TOUR

ENGLISH  
TOUR GUIDING HAND-BOOK



THIS STUDY GUIDE IS PROPERTY OF ROCK ISLAND TOUR COMPANY LTD. AND IS NO WAY AUTHORISED TO BE GIVEN TO ANYONE OUTSIDE COMPANY STAFF UNLESS PRE-APPROVED BY MANAGEMENT. THANK YOU !



# NOTES

---



---



---



---



---



---



---



---



---



---



---



---



---



---



---



---



---



---



---



---



---



---

# INTRODUCTION

This booklet was made to cover most of the information necessary for guiding RITC's Peleliu Tour in English. Even with much of the basic information covered, it does not go into much more depth on the subjects. Most information was taken and re-written from different sources found in books, movies, and around the internet. If you'd like to have a fuller and deeper understanding of The Battle of Peleliu then it is necessary to review more detailed sources (some of which are listed at the back of this booklet).

Visitors to Palau may join the Peleliu tour for many different reasons, but the main reason that brings us all together is that of it's WWII history. For both Japanese and American were there severe tragedy and loss. Some of the most courageous, haunting, sickening and brutal scenarios unfolding, one after another.

This booklet was made smaller so it can be taken around on tour and used for reference, learning and review. Many terms or specifics can be found in more detail near the end of the booklet.

Another very valuable source of knowledge comes while guiding the tour itself. You will encounter customers who will educate you on various aspects of the battle or war that will become a part of your guiding style as well. The tourists will have many different backgrounds and share with you information otherwise you would never learn. By being knowledgeable and enthusiastic to share your information, it is likely they will respond with discussion to expand on both of your knowledge.

***Peleliu is a very exciting and rewarding tour with constant room to improve the experience. By the end of this booklet, you should have enough basic information to guide this in English all on your own, as long as you can grasp the battle as a whole.***

***Hope this serves you well and enjoy the read!***  
***- Cameron***

**!!! You may often encounter information and history that conflicts with other sources, and it will be up to you to determine which one is the 'most' true !!!**



# REFERENCES

For further independent studies and research there are several resources that can serve as extremely helpful in understanding Peleliu battle in its entirety and from different perspectives. Listed below are a few good places to start gathering further information. There is so much good material available out there in books and on the web. Be smart about what you decided to use as fact and critically question the information you encounter. Do this for all your studies.. Ever!! Thanks for reading this book over, best of luck with your tours (and your lives!). -Cameron

---

## Books

With This Old Breed - Eugene Sledge

*We also have a number of folders and reference books on Peleliu in the office. If you ask Kikuchi-san if you can have a look at it, then you will find some interesting material on Peleliu as well*

## Websites

<https://chindits.wordpress.com/tag/battle-for-peleliu/>

An excellent website that explains various details as well as general understandings about the battle. A look at “the big picture” of it all with many specific references and useful information.

<http://www.militaryhistoryonline.com/wwii/peleliu/default.aspx>

This has plenty of useful information and photos around, with well described events of the battle organized into different sections on the website that is easy to navigate. The only major concern is the length of typing out the website..

[http://www.nps.gov/history/history/online\\_books/npswapa/extContent/usmc/pcn-190-003137-00/sec1.htm](http://www.nps.gov/history/history/online_books/npswapa/extContent/usmc/pcn-190-003137-00/sec1.htm)

For .mp3 interview (6 parts) with Eugene Sledge about his time in the war, please search this link for his name and the interview files:

<http://conversations.studsterkel.org/gwar.php>

## Film/Specials

Our company owns a copy of a 1-hour documentary that interviews veterans who fought along side in the 1st Marine Division in Peleliu and shows many video clips from the battle.

Peleliu 1944: Horror in the Pacific

*We also possess a few of DVDs that were made with a bunch of different videos and documentaries on Peleliu. Ask our office staff where we can find em.*

# SUMMARY (pg. 1/7)

**The summary found in this booklet is almost a direct copy of that off Wikipedia. It provided the shortest and greatest coverage of the battle. Some of the information you will find here might contradict other info you come across, so always check your sources and search for “the truth”, whatever that really is...**

## Overview

The Battle of Peleliu, codenamed Operation Stalemate II, was fought between the United States and the Empire of Japan in the **Pacific Theater** of World War II, from September–November 1944 on the island of Peleliu, present-day Palau. **U.S. Marines of the 1st Marine Division** and later soldiers of the **U.S. Army’s 81st Infantry Division**, fought to capture an airstrip on the coral island. This battle was part of a larger offensive campaign known as Operation Forager which ran from June–November 1944 in the Pacific Theater of Operations.

**Major General William Rupertus, USMC—commander of 1st Marine Division**—predicted the island would be secured within four days. However, due to Japan’s well-crafted fortifications and stiff resistance, the battle lasted over two months. In the United States, it was a controversial battle because of the island’s questionable strategic value and the high casualty rate, which exceeded all other amphibious operations during the Pacific War.

## Background

By the summer of 1944, victories in the Southwest and Central Pacific had brought the war closer to Japan, with American bombers able to strike at the Japanese main islands from air bases secured during the Mariana Islands campaign (June–August 1944). There was disagreement among the U.S. Joint Chiefs over two proposed strategies to defeat the Japanese Empire. The strategy proposed by **General Douglas MacArthur** called for the recapture of the Philippines, followed by the capture of Okinawa, then an attack on the Japanese mainland. **Admiral Chester Nimitz** favored a more direct strategy of bypassing the Philippines, but seizing Okinawa and Taiwan as staging areas to an attack on the Japanese mainland, followed by the future invasion of Japan’s southernmost islands. Both strategies included the invasion of Peleliu, but for different reasons.

The 1st Marine Division had already been chosen to make the assault. President Franklin D. Roosevelt traveled to Pearl Harbor to personally meet both commanders and hear their arguments. MacArthur’s strategy was chosen. However, before MacArthur could retake the Philippines, the Palau Islands, specifically Peleliu and Angaur, were to be neutralized and an airfield built to protect MacArthur’s right flank.

# SUMMARY (pg. 2/7) The Preparation

## Japanese Preperation

By the summer of 1944, Peleliu Island was occupied by **about 11,000 Japanese of the 14th Infantry Division with Korean and Okinawan laborers. Colonel Kunio Nakagawa** — commander of the Division's 2nd Regiment — led the preparations for the island's defense.

After their losses in the Solomons, Gilberts, Marshalls and Marianas, the Imperial Army assembled a research team to develop new island defense tactics. They chose to abandon the old tactic of stopping the enemy at the beach. The new tactics would only disrupt the landings at the water's edge and depend on an in-depth defense farther inland. Colonel Nakagawa used the rough terrain to his advantage, by constructing a system of heavily fortified bunkers, caves, and underground positions all interlocked into a sort of "honeycomb" system.

Nakagawa's defenses were based at Peleliu's highest point, Umurbrogol Mountain, a collection of hills and steep ridges located at the center of Peleliu overlooking a large portion of the island, including the crucial airfield.

**The Umurbrogol contained some 500 limestone caves, inter-connected by tunnels.** Many of these were former mine shafts that were turned into defense positions. Engineers added sliding armored steel doors with multiple openings to serve both artillery and machine guns.

Cave entrances were built slanted as a defense against grenade and flamethrower attacks. The caves and bunkers were connected to a vast system throughout central Peleliu, which allowed the Japanese to evacuate or reoccupy positions as needed, and to take advantage of shrinking interior lines.

The Japanese also used the beach terrain to their advantage. The northern end of the landing beaches faced a 30-foot (9.1m) coral mound which overlooked the beaches from a small peninsula, a spot later known to the Marines who assaulted it simply as "The Point". Holes were blasted into the ridge to accommodate a 47 mm (1.85 in) gun, and six 20 mm cannons. The positions were then sealed shut, leaving just a small firing slit to assault the beaches. Similar positions were crafted along the **2-mile (3.2 km) stretch of landing beaches.**



A photo of "The Point"

The beaches were also filled with thousands of obstacles for the landing craft, principally mines and a large number of heavy artillery shells buried with the fuses exposed to explode when they were run over. A battalion was placed along the beach to defend against the landing, but they were meant to merely delay the inevitable American advance inland.

# HIGHLIGHTED TERMS & VOCABULARY

## Molotov Cocktail

A Molotov cocktail is a breakable glass bottle containing a flammable substance such as gasoline/petrol or a napalm-like mixture, with some motor oil added, and usually a source of ignition such as a burning cloth wick held in place by the bottle's stopper. The wick is usually soaked in alcohol or kerosene, rather than gasoline.

## Mortar

A mortar is an artillery weapon which fires explosive shells. The shells are known as (mortar) bombs. They are fired at targets which are close, as mortars do not have long range. It has a short barrel which fires the mortar bomb at a low speed high into the air to reach its target.

## Pacific Theatre

a major theatre of the war between the Allies and Japan. It included the Philippines, the Dutch East Indies, Borneo, Australia, New Guinea and the western part of the Solomon Islands.

## Phosphate

An important compound in making an effective fertilizer for farming.

## Pillbox

A pillbox is a small building made of concrete that also has small windows that people can shoot guns out of. The name came from the fact that they look like the boxes that pills came in.

## Tank

A tank is a large type of armoured fighting vehicle with tracks, designed for front-line combat.

## (Gun) Turret

A gun turret is a weapon mount that protects the crew or mechanism of a projectile-firing weapon and at the same time lets the weapon be aimed and fired in many directions. The turret is also a rotating weapon platform.

## Whip Spider

A non-venomous spider that appears in some caves around Palau and similarly found worldwide. These spiders have long front legs with spikes on the interior to grab prey. They sense by whipping their thin, long legs around for prey, or when preparing to fight.

# HIGHLIGHTED TERMS & VOCABULARY

## **Ammunition**

the objects (such as bullets and shells) that are shot from weapons

## **Bombardment**

a continuous attack with bombs, shells, or other missiles.

## **Bombshelter**

any kind of a civil defense structure designed to provide protection against the effects of a bomb.

## **Bunker**

A bunker is a defensive military fortification designed to protect people or valued materials from falling bombs or other attacks. Bunkers are mostly below ground

## **Casualties**

a person who is killed or rendered unfit for service in a war

## **Causeway**

a raised road or path that goes across wet ground or water

## **D-Day**

In the military, D-Day is the day on which a combat attack or operation is to be initiated

## **Howitzer**

A howitzer is a type of artillery piece characterized by a relatively short barrel and the use of comparatively small propellant charges to propel projectiles at relatively high trajectories, with a steep angle of descent.

## **Japanese Empire**

was a parliamentary constitutional monarchy, empire and world power that existed from January 3, 1868 to the enactment of the 1947 constitution of modern Japan.

## **Manchuria**

a modern name given to a large geographic region in Northeast Asia. Depending on the definition of its extent, Manchuria usually falls entirely within China, or is sometimes divided between China and Russia.

# SUMMARY (pg. 3/7) The Preparation

## **American Preparations**

Unlike the Japanese, who drastically altered their tactics for the upcoming battle, the American invasion plan was unchanged from previous amphibious landings. On Peleliu, American planners chose to land on the southwest beaches, due to their proximity to the airfield on South Peleliu. The 1st Marine Regiment—commanded by Col. Lewis B. Puller—was to land on the northern end of the beaches. The 5th Marine Regiment—under Col. Harold D. Harris—would land in the center, and the 7th Marine Regiment—under Col. Herman H. Hanneken—would land at the southern end.

The division's artillery regiment—the 11th Marines—would land after the infantry regiments. The plan was for the 1st and 7th Regiments to push inland, guarding the 5th Regiment's left and right flank, and allowing them to capture the airfield located directly to the center of the landing beaches. The 5th Marines were to push to the eastern shore, cutting the island in half. The 1st Marines would push north into the Umurbrogol, while the 7th Marines would clear the southern end of the island. Only one battalion was left behind in reserve, with the Army's 81st Infantry Division available for support from Angaur.

The Navy's Underwater Demolition Team went in first to clear the beaches of obstacles, while U.S. Navy warships began

their *pre-invasion bombardment of Peleliu on 12 September*.

The battleships Pennsylvania, Maryland, Mississippi, Tennessee and Idaho, heavy cruisers Columbus, Indianapolis, Louisville, Minneapolis and Portland, and light cruisers Cleveland, Denver and Honolulu, led by the command ship USS Mount McKinley (AGC-7) subjected the tiny island, only 6 sq mi (16 km<sup>2</sup>) in size to a massive **3-day bombardment**, pausing only to permit air strikes from the three fleet, five light aircraft carriers, and eleven escort carriers with the attack force. *A total of 519 rounds of 16 in (410 mm) shells, 1,845 rounds of 14 in (360 mm) shells, 1,793 500 lb (230 kg) bombs were dropped on the islands during this period.*

The Americans believed the bombardment to be successful, as Rear Admiral Jesse Oldendorf claimed that the Navy had run out of targets. In reality, the majority of the Japanese positions were completely unharmed. Even the battalion left to defend the beaches was virtually unscathed. During the assault, the island's defenders exercised unusual firing discipline to avoid giving away their positions. The bombardment managed only to destroy Japan's aircraft on the island, as well as the buildings surrounding the airfield. The Japanese remained in their fortified positions, ready to attack the troops soon to be landing.

# SUMMARY (pg. 4/7) The Battle

## Landing

*The Marines landed at 08:32 on 15 September;* the 1st Marines to the north on “White Beach 1 and 2”, and the 5th and 7th Marines to the center and south on “Orange Beach 1, 2, and 3”. As the other landing craft approached the beaches, they were caught in a crossfire when the Japanese opened the steel doors guarding their positions and fired artillery. *By 09:30, the Japanese had destroyed almost 60 LVTs.*

The 1st Marines were quickly held down by heavy fire from the extreme left flank and a 30 foot high coral ridge, “The Point”. Colonel Chesty Puller narrowly escaped death when a dud high-velocity artillery round struck his LVT. His communications section was destroyed on its way to the beach by a hit from a 47 mm round. The 7th Marines faced a cluttered Beach Orange 3, with natural and man-made obstacles, forcing the LVTs to approach in column.

The 5th Marines made the most progress on the 1st day, due to cover provided by coconut groves. They pushed toward the airfield, but were met with Nakagawa’s first counterattack. His armored tank company raced across the airfield to push the Marines back, but was soon engaged by tanks, howitzers, naval guns and dive bombers. Nakagawa’s tanks and escorting infantrymen were quickly destroyed.

At the end of the 1st day, the Americans held their 2-mile (3.2 km) stretch of landing beaches, but not much else. Their biggest push in the south moved 1 mile (1.6 km) inland, but the 1st Marines to the north made very little progress because of the extremely thick resistance. *The Marines had suffered 200 dead and 900 wounded.* Rupertus, still unaware of his enemy’s change of tactics, believed the Japanese would quickly crumble since their perimeter had been broken.



5th  
Marines  
on  
Orange  
Beach

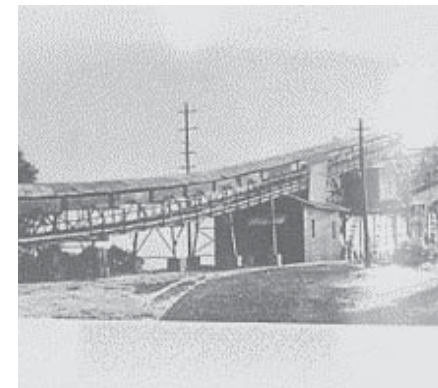
## The Airfield/South Peleliu

On the 2nd day, the 5th Marines moved to capture the airfield, push toward the eastern shore. They ran across the airfield, enduring heavy artillery fire from the highlands to the north, suffering heavy casualties in the process. After capturing the airfield, they rapidly advanced to the eastern end of Peleliu, leaving the island’s southern defenders to be destroyed by the 7th Marines.

# THE BATTLE OF ANGAUR (continued)

## Phosphate Mining In Palau

Though Bauxite was the primary resource being mined on Babeldaob, Peleliu and more specifically Angaur had large Phosphate deposits on them. The Germans realized this upon occupation and setup very large mines and factories for the processing. The Japanese took over this operation for the following few decades and expanded their digging as far Palau’s South-West Islands.



September 17th, US boats approach for the invasion of Angaur

## GENERAL INFORMATION

- The Airfield is still being used to this day, mostly for drops by PMA (Palau Mission Academy) and sometimes US forces. The jungle has grown thick around Angaur, but there are still several wrecks around the island (most now lost) and was also used as a junkyard for planes (which many still remain around now).
- Angaur’s specie of monkey that remains on the island is known as the Crab-Eating Macaque and is very common throughout South-East Asia.

# THE BATTLE OF ANGAUR

The Battle of Angaur in total lasted just over 1 month and had about 1,400 Japanese defenders. The Americans began bombarding the island on Sept.11th and continued for 6 days until they *invaded the island on Sept. 17th*, two days after the invasion of Peleliu. By Sept. 30th, the island was said to be secure though there were about 300 remaining Japanese soldiers still defending from caves. The island's defense commander was killed on Oct. 19th and the last day of fighting was Oct. 22nd, a total of 36 days.

Angaur is much smaller and flatter than Peleliu, however it had some raised coral ridges like those found on Peleliu where the Japanese used the same defense style to hold off the Americans. An area called "The Bowl" is raised coral ridge area on the North-West end of Angaur and where almost 1,000 Japanese soldiers were hiding. The battling style was tough and resembled that of in Peleliu.

The Americans sent approximately 10,000 soldiers to secure Angaur, had 260 killed, 1,350 wounded and 940 soldiers unable to fight due to accidents, heat-exhaustion and sickness. This made the total casualty rate for the Americans about 2,500, one of the few times in the Pacific Theatre that the Americans suffered greater casualties (but not deaths) than the Japanese in a battle.



Angaur had (and still has) an airfield that the American forces quickly put to use after securing the island. Once the Japanese forces were reduced to their final fighting quarters, the Americans had already repaired the airstrip and had been taking off several bomber aircrafts to attack Peleliu and surrounding islands. By November, they had 4 different bomber Divisions on the islands taking off large B-24 bombers for raids around the Palaus and over the Philippine Sea.

The 81st Army Division which was stationed on Angaur was sent as a substitute for the 1st Marine Div. on Peleliu who suffered great casualties in Bloody Nose Ridge at the end of September.

# SUMMARY (pg. 5/7) The Battle

This area was hotly contested by the Japanese, who still occupied numerous pillboxes. *With a temperature of 115 °F (46 °C), the Marines soon suffered high casualties from heat exhaustion.* Further complicating the situation, the Marines' water was distributed in empty oil drums, and became contaminated and poisoned by the oil. Still, by the eighth day the 5th and 7th Marines had accomplished their objectives, holding the airfield and the southern portion of the island, although the airfield remained under threat of sustained Japanese fire from the heights of Umurbrogol Mountain until the end of the battle.

American forces put the airfield to use on the third day, beginning aerial spotting missions for Marine artillery and naval gunfire support. On 26 September (D+11), Marine F4U Corsairs from VMF-114 landed on the airstrip. The Corsairs began dive-bombing missions across Peleliu, firing rockets to open cave entrances for the infantrymen, and dropping napalm; it was only the second time napalm had been used in the Pacific. Napalm proved useful, burning away the vegetation hiding 'spider holes' and usually killing their occupants.

Puller led his men in numerous assaults, but every one brought on severe casualties by the Japanese. The 1st Marines were trapped within the narrow paths between the ridges, with each ridge fortification supporting the other with deadly crossfire.

The Marines took increasingly high casualties as they slowly advanced through the ridges. The Japanese again showed unusual fire discipline, striking only when they could inflict maximum casualties. As casualties mounted, Japanese snipers began to take aim at stretcher bearers, knowing that if two stretcher bearers were injured or killed, more would have to return to replace them, and the snipers could steadily pick off more and more Marines. The Japanese infiltrated the American lines at night to attack the Marines in their foxholes. The Marines built two-man foxholes, so one could sleep while the other kept watch for infiltrators.

## Bloody Nose Ridge

After securing the beaches, the 1st Marines moved north into the Umurbrogol pocket, named "Bloody Nose Ridge" by the Marines.

### FUN FACT !!

Angaur is the only place in the entire world other than Japan itself where Japanese is considered an official language.

# SUMMARY (pg. 6/7) The Battle

## Bloody Nose Ridge (Continued)

One particularly bloody battle on Bloody Nose came when the 1st Battalion, 1st Marines attacked Hill 100. Over six days of fighting, the battalion suffered 71% casualties. Captain Everett Pope and his company penetrated deep into the ridges, leading his remaining 90 men to seize what he thought was Hill 100. It took a day's fighting to reach what he thought was the crest of the hill, which was in fact another ridge, occupied by more Japanese defenders. Trapped at the base of the ridge, Pope set up a small defense perimeter, which was attacked relentlessly by the Japanese throughout the night. The Marines soon ran out of ammunition, and had to fight the attackers with knives and fists, even resorting to throwing coral rock and empty ammunition boxes at the Japanese. Pope and his men managed to hold out until dawn came, which brought on more deadly fire. When they evacuated the position, only nine men remained. Pope later received the Medal of Honor for the action.

The Japanese eventually inflicted 70% casualties on Puller's 1st Marines, or 1,749 men. After six days of fighting in the ridges of Umurbrogol soldiers of the 81st Infantry Division in Angaur moved to Peleliu to relieve the 1st Marines. The 321st Regiment Combat Team landed on the western beaches of Peleliu—at the northern end of Umurbrogol mountain—on 23 September.

By October, the 7th Marines had suffered 46% casualties and General Geiger relieved them with the 5th Marines. Col. Harris adopted siege tactics, using bulldozers and flame-thrower tanks, pushing from the north. On 30 Sept., the 81st Inf. Div. took over command of Peleliu, taking another six weeks, with the same tactics, to reduce The Pocket.

On 24 November, Nakagawa proclaimed "Our sword is broken and we have run out of spears". He then burnt his regimental colors and performed ritual suicide. He was posthumously promoted to lieutenant general for his valor displayed on Peleliu. On 27 November, the island was declared secure, ending the 73-day long battle.



## BLOODY NOSE RIDGE (continued)

Bloody Nose Ridge was not the only ridge system, but was one of many. Each ridge system had its own unique challenges for both US and JP forces. Some of the cave systems on ground level were so impossible to clear out that the US forces were bringing in bulldozers to seal off cave openings with giant mounds of coral. Many of the cave systems were completely closed off and all the Japanese soldiers died in the cave. The government

of Peleliu has strictly forbidden the re-opening of these caves and that everything is to remain as is. All bones and remnants would have remained exactly as when they were covered.

There are still many remnants of the battle that are being uncovered and many that may never be seen again.

What Bloody Nose looks like today is a world of difference then at the time of the battle, but it brings us closer than books can ever describe.

### GENERAL INFORMATION

- There were around 500 separate cave systems in the Umurbrogol Mt. range. This does not mean 500 cave openings, but different cave systems.
- Nearly 80% of Japanese troops in Peleliu hideout in the Umurbrogol Mts.
- The US forces used on average over 1,500 rounds of light and heavy ammunition per 1 Japanese soldier killed (11,000 JP soldiers x 1,500 rounds = a lot of ammo)
- The 1st Marine Div. suffered so many casualties (over 60%) fighting here that they were taken out of battle and replaced by the 81st Div. who were on reserve on Angaur.

## BLOODY NOSE RIDGE ( OYAMA )

The highest point of Peleliu, at 75m(246ft) is the point we know as Oyama. It overlooks Bloody Nose Ridge as well as many of the other locations of fierce battles within the Umurbrogol Mts. When Peleliu was analyzed by US airplanes and from a far, it was seen as relatively flat and unassuming.

Being atop of the mountain gives a very different perspective of Peleliu. It looks much higher than expected and many of the ridges have a very clear view of the southern airfield, the beaches and the western invasion points. This point much more clearly how the ridges were defended.

Some of the defenses the Japanese built high up in the mountains were big anti-tank and anti-ship cannons setup in caves facing the south. Some of these caves were so elaborate that they had thick-steel sliding doors to provide protection after having fired.



## BLOODY NOSE RIDGE

The Bloody Nose Ridge system was one of the most heavily defended areas by the Japanese. The highest concentration of cave systems, the highest casualty rate for the Americans, the most amount of ammunition used by the Americans and had some of the last caves to be cleared out (including Col. Kunio Nakagawa's cave of the "Last Stand").

To this day, the trail which runs through Bloody Nose Ridge is how tourists can access some of the different areas of the Umurbrogol Mts. As the Cleared Ground De-mining team continues to clear caves and the areas off the trail, we see relics of the war on the side of the trail as we venture through Bloody Nose Ridge.

Notice the narrow area in which the main trail follows, how little cover and room there would be for the Americans to hide and how the narrow ground space is surrounded by steep cliffs on both sides, full of cave openings. Some cave openings at medium or high elevations may have even had multiple entrances and exits. The Japanese soldiers who were holding out in the caves were ordered not to recklessly give their lives and that they could not kill themselves nor starve to death and must properly fight to the death.

As the Americans slowly battled their way through the many different ridges and valleys, their progress would often be lost as the caves they thought they had emptied of Japanese soldiers would refill. This was because some of the cave systems had multiple exits and entrances for soldiers to utilize.

It took around 2 weeks to secure Peleliu island, but the battles within the ridges went on for a total of almost 10 weeks of intense fighting.



### PRECAUTIONS

Advise everybody to bring drinks as well as yourself

If going separately from the Japanese group, set a time to meet up again

In Bloody Nose Ridge, remind everyone to stay on the trail. They must NOT bring any artifacts back with them and to handle all artifacts with care.

If climbing Oyama, first check with your customers or make sure if going up is appropriate or not (depending on age or physical conditions)

## SUMMARY (pg. 7/7) The Result

### The Result

The reduction of the Japanese pocket around Umurbrogol mountain has been called the most difficult fight that the U.S. military encountered in the entire war. The 1st Marine Division was severely mauled and it remained out of action until the invasion of Okinawa on 1 April 1945. In total, *the 1st Marine Division suffered over 6,500 casualties during their month on Peleliu, over 1/3 of their entire division. The 81st Infantry Division suffered nearly 3,300 casualties during their tenure on the island.*

Postwar statisticians calculated that it took US forces over *1500 rounds of artillery ammunition to kill each Japanese defender*, and that during the course of the battle, the Americans expended 13.3 million rounds of 30-calibre, 1.5 million rounds of 45-calibre, 693,657 rounds of 50-calibre bullets, 118,262 hand grenades and approximately 150,000 mortar rounds.

The battle was controversial due to the island's lack of strategic value and the high casualty rate. The defenders lacked the means to interfere with potential US operations in the Philippines, and the airfield captured on Peleliu never played a key role of subsequent operations. *The high casualty rate exceeded all other amphibious operations during the Pacific War.*

The battles for Angaur and Peleliu showed Americans the pattern of future Japanese island defense which would be seen again at Iwo Jima and Okinawa. Naval bombardment prior to amphibious assault at Iwo Jima was only slightly more effective than at Peleliu, but at Okinawa the preliminary shelling was superb. Frogmen performing underwater demolition at Iwo Jima confused the enemy by sweeping both coasts, but later alerted Japanese defenders to the exact assault beaches at Okinawa. American ground forces at Peleliu gained experience in assaulting heavily fortified positions such as they would find again at Okinawa.



Photo taken in 1946, already with the jungle re-growing

# MAP

PACIFIC OCEAN

- WHITE 1 - 3rd Bn, 1st Marines
- WHITE 2 - 2nd Bn, 1st Marines  
1st Bn (Reserve)
- ORANGE 1 - 1st Bn, 5th Marines
- ORANGE 2 - 3rd Bn, 5th Marines  
2nd Bn (Reserve)
- ORANGE 3 - 3rd Bn, 7th Marines  
2nd Bn (Reserve)



PELELIU  
15 SEPTEMBER 1944

0 500 1000 2000 3000  
YARDS

MAP BY AKHIL KADIDAL



~1:35pm (10mins)

PRIORITY: **HIGH**

## JP Artillery, LVTA-1 and POW Camp



This Japanese artillery was setup facing Eastward, over Purple Beach. It still remains in perfect condition and said to never to been fired at enemies as it had no targets to the East.

It fired **200mm** shells capable of travelling a distance of **5-7kms**.

There may have been many more of these cannons setup facing the west and south but would have been high priority targets for the Americans to destroy. Many of the caves that would have held the old artillery would have been most likely destroyed, collapsed.



### PRECAUTIONS

Watch head in the small cave and tell customers not to climb on the cannon as it is old and fragile and dangerous if you lose your balance and fall

### GENERAL INFORMATION

POW (Prisoner of War) Camp: As there were only a handful (19) of Japanese soldiers captured alive, many prisoners in this POW camp near Umurbrogol Mt. range were either **Korean or Okinawan**. This was the only POW camp in Peleliu. The prisoners of this camp were sent in intervals to Hawaii for rehab after the battle. They were put back on their feet and brought back to health

LVT: This LVT is actually an LVTA-1, and what separates it from the LVTA-4 most distinguishably is the turret/cannon on top, much smaller than that of the LVTA-4. It looks like it has taken a good amount of damage, with many bullet holes and shell blasts. It was most likely abandoned here because it would have been used in front-line combat in this ridge area, trying to clear out caves and receiving fire as well.

### FUN FACT !!

This artillery may have had a few test rounds fired before usage, however the original round that would have been used to fire on Americans is still present on the cannon. You can see it, an a-symmetrical shell just on the left side of the top piece.



## LVT-4/LVTA-4

The Americans had developed these vehicles (not tanks!) as a prototype and were first put to combat use in the **Pacific Theatre**, with the many beach invasions on the many Pacific Islands.

From 1941-1945 there had been 3 major upgrades on the LVTs, all the way up to the LVT4's (seen only in the very last months of the Pacific Theatre). Their upgrades provided more speed, more armor, heavier weaponry, and more reliability.

By the time of the production of the LVT4 their had been over 20,000 LVTs made.

The LVT's armor was often so thin that it would be easily pierced by anti-tank rounds or even heavy .50 caliber machine guns. This was because they were vehicles made to float full of soldiers and heavy loads. The early model vehicles were barely armed for combat but by the time of the Battle of Peleliu had weapons such as the large **75mm Howitzer cannon** on top of the LVTA-4s and alternative weapons such as a **mounted flamethrower**. The mounted flamethrowers on LVTs were used commonly throughout Peleliu in attempts to clear out cave openings from afar.

To exit an LVT, soldiers would have to climb bail out the back and sides when they arrived at the beaches.

Typical LVT-4's would be capable of carrying up between 15-20 passengers, but also were used to transport supplies, weapons and even small Jeeps.

### LVT(A)-4

Landing Vehicle Tracked  
"Amtrack" "Alligator"

### LVTA-4

**Crew:** 2-7

**Weight:** 37,000lbs - 46,000lbs

**Weapons:**

2 x 12.7mm MGs

2 x 7.7mm MGs

**LVTA-4:** 1 x 75mm Howitzer

3 x 7.7mm MGs

**Engine:** 250hp 4-cyl

**Max Speed:**

Land: 35km/h

Water: 12 km/h

**Typical LVTA-4 Crew:**

Commander, Gunner, Loader,  
Driver, Assistant Driver, AA  
Machine Gunner

## FUN FACT !!

During the landings on Orange and White Beach the LVT's came in at high tide to avoid getting stuck in any holes dug in the ground by the Japanese. First the LVT's would let their troops out, the troops would spot Japanese machine gun nests and artillery, then a wave of LVTA's would come in and fire their heavier weapons on the Japanese positions that were spotted.

# LOCATIONS

The different locations that are always or sometimes visited are all listed here in this booklet. For each location, there are is pretty standard and basic knowledge to have as well as some locations/sites having a lot more in-depth knowledge worth researching.

Feel free to bring this with you on tour and reference as you go, especially if you are still beginning My apologies if some of the information is worded poorly or is difficult to understand. I hope it serves you well and that my spirit will always be part of this booklet.

## PELELIU ISLAND HISTORICAL SIGHTSEEING TOUR

North Dock .....	14	.JP Navy Headquarters .....	22
Japanese Pillbox .....	14	JP Tank .....	23
Ngesebus .....	15	Airstrip .....	23
1000 Man Cave.....	16	Orange Beach .....	24
Japanese Machine Gun Post .....	17	Zero Fighter .....	25
JP Causeway / Mining.....	17	South Dock .....	25
Peleliu Main Town .....	18	Zero Figther .....	26
Peleliu Elementary School .....	18	American Avenger .....	27
Cemetary .....	19	LVTs .....	28
Post War Holdout .....	20	LVTA-1 and Cannon .....	29
Museum .....	21	Bloody Nose Ridge .....	30-31
Power Plant .....	22	Angaur.....	32-33



## NORTH DOCK

Peleliu's North Dock and the channel leading there were originally built by the Japanese Navy during their occupation of the Palau islands to allow ships to transport supplies to and from Koror. This was necessary in the development of Peleliu island as a important location and for mining operations and Navy base establishment. There was a small town built around the North Dock area where mostly Japanese Navy men worked as well as some of their families lived. There was also a causeway built to Ngesebus (similar of that attaching Koror to Malakal) just south of tje dock area.

Since the North Dock was a few kilometers north from the landing beaches and didn't have many defensive structures, it wasn't a site of a big battle (however, of course there was battle just about everywhere on Peleliu).

**! PRECAUTIONS**

If the tide is very low, helping customers up can be quite challenging

Make sure everyone has what they need with them

This is the last bathroom stop for a while. Go now!



## JAPANESE PILLBOX

No more than a few seconds drive from North Dock is a Japanese **pillbox**. It remains in great condition as it was most likely abandoned by Japanese soldiers and not used for defensive purposes. The US soldiers would have come from the south of the structure and thus its angle and positioning would provide little defense.



## US TBF "Avenger"

The Avenger was the primary and most powerful bomber the Americans would be able to take-off **from an aircraft carrier**. Up until the Americans had secured and readied the airstrips in Angaur, these would be the largest planes able to service here. Capable of carrying up to a 2,000lbs bomb or torpedo, their use was unmatched.

The Avenger aircraft we run into here is crumbled up and destroyed in what doesn't look like it a very nice landing. You can quickly understand the size of these, looking at the large propeller blades and wings, it gives some perspective on how large this aircraft was. The back gunner seat had a dome-type window with a machine gun mounted on the cockpit as well as a rear lower glass dome to shoot from the bottom of the aircraft.

Though the Avenger possessed a powerful, 1900HP engine, it didn't have the speed or maneuverability of a zero fighter, however had enough weapons, crew and armor to be a tough fighter.

### Grumman TBF Avenger (General Motors)

- Crew:** 3
- Weight:** Empty- 10,545lbs  
Loaded- 17,893lbs
- Length:** 12.48m
- Wingspan:** 16.51m
- Engine:** 1,900hp
- Max Speed:** 442km/h

### Weapons

- Guns:** 2 x 12.7mm  
Wing-mounted MGs  
1 x 12.7mm  
Dorsal-mounted MG  
1 x 7.62mm  
Ventral-mounted MG

- Bombs:** Up to  
2,000lbs(907kgs)  
of bombs -OR-  
1 x 2,000lbs Torpedo



**FUN FACT !!**

Since the TBF Avenger could carry up to a 2000lb bomb, they were the largest bombs used in the Peleliu battle. The JP Navy HQ has 2 huge holes in its roof that destroyed the floor underneath as well. Both of these holes would have been caused by a bomb as large as 2000lbs.

# JP “Zero” FIGHTER

The Japanese ‘zero’ fighter was the most produced and used combat airplane for the Japanese during the Pacific War. It was a fast, maneuverable fighter with a number of welltrained pilots which gave the airplane its immortal reputation.

The American’s first serious encounter with them was the surprise attack of Pearl Harbor. At first, the Zero fighter was an airplane clouded with mystery of its weaknesses and potential as an aircraft. The Americans discovered how agile it was, but also how even a small amount of bullets in the right place would disable its flight abilities quite easily.

The Zero fighter, by the time the war was almost over, had been surpassed by most new American planes being made and lost its edge.

Zero fighters were also the primary airplanes used in Kamikaze attacks nearing the very end of WWII (in Peleliu, the tactic hadn’t been employed yet).



## Mitsubishi A6M Zero

- Crew:** 1
- Weight:** Empty- 3,704lbs  
Loaded- 5,313lbs
- Length:** 9.06m
- Wingspan:** 12.0m
- Engine:** 950hp
- Max Speed:** 533km/h

- Weapons**
- Guns:** 2 x 20mm  
Wing-Mounted MGs  
2 x 7.7mm  
Engine mounted MGs
- Bombs:** 2 x 60kg (132lbs)  
bombs -OR-  
1 x 250kg (551lbs)  
bomb for kamikaze



### FUN FACT !!

In July 1942 , in the North Pacific Akutan Islands of Alaska, a crashed but intact zero fighter was retrieved from a marsh. The zero fighter had crashed upside down in deep mud, killing the pilot but the plane remaining mostly undamaged. The Americans repaired the plane to fly it, then deeply studied its strengths, weaknesses and limitations, labeled as “probably one of the greatest prizes of the Pacific war” for the USA

# NGESEBUS

Just north-west of Peleliu’s North Dock is Ngesebus island. It was connected to Peleliu’s North Dock by a raised **causeway** that would still allow boats to pass.

It had around **500 Japanese troops** and several anti-aircraft and anti-ship artillery positions. A smaller airfield was being built but was not yet being used by the time the Americans did their main invasion of Peleliu.

A 2-day bombardment began on Ngesebus on Sept. 26th, and the island was invaded by the **1st Marine Div.** On the morning of **September 28th**, where they attacked from the captured North Dock using transportation boats and LVTs. As the boats and LVTs advanced, the island was also struck by heavy US artillery and naval fire. As the boats approached the shoreline, American planes bombed the land just behind the shores to keep the Japanese trapped in their shelters for the American’s beach landing.



As the flames cleared from the airplane’s bombing, the LVT’s burst onto the shores and fired upon all the visible defense positions. This resulted in the Japanese forces being completely overwhelmed. The Japanese had built their defenses inside concrete structures and caves such as Peleliu, however the caves stood alone and were easy to overtake one by one.

The attack on Ngesebus costed the **American Forces 48 casualties (15 killed and 33 wounded)**, while inflicting **470 casualties on the Japanese.**

### FUN FACTS !!

Since the battle of Peleliu, Ngesebus has been unpopulated and mostly unvisited by tourists. Many remnants and wrecks are still around the island, frozen in time since the battle. The island is only accessible by motor boat at high tide on its outer reef, which is not easy (or walking or kayak, not for tourists)

~10:30am (10-15mins)

PRIORITY: **HIGH**

## 1,000-MAN CAVE

This cave was the largest of all the cave systems in Peleliu. In fact, it was so large and elaborate that Americans had assumed it must have been used for mining purposes (however, it was not).

Located close to Peleliu's North Dock, many of the 1000 or so occupants of the cave were not soldiers suited for front-line combat. Many NAVY men, Okinawan and Korean laborers hid inside this cave system using guns, rifles, grenades and **molotov cocktails** (in this case, using sake bottles) to defend against the invading Americans. Much like the overtake of other caves by the Americans, they used flamethrowers as their primary method to kill the trapped Japanese forces and Koreans inside the caves.

### GENERAL INFORMATION

Before the battle of Peleliu, Japanese usually used concrete structures for their primary defense. Peleliu was the first time the Americans had encountered such defenses which lead to the big miscalculation of the takeover time/cost of Peleliu Island (3-4 days expected, over 2 1/2 months to clear). Peleliu's cave systems were so effective for the Japanese that they implied the same defensive tactics in two very well-known /big battles following Peleliu; Iwo Jima and Okinawa.

### FUN FACT !!

The crickets found in these caves are carnivorous and usually eat smaller insects HOWEVER there have been reports that if small creatures (bats, birds, toads) die in a cave they will swarm the corpse and feast on it. Also keep an eye out for the **Whip Spiders**.



### PRECAUTIONS

Check flashlights' function thoroughly

Always remind customers to be careful not to bump their heads while inside the cave.

Watch people's footing and take rests to ensure people don't get a sore back.

Distract customers if they start to panic. If severe, ask them to wait outside the cave

## D-DAY INVASION BEACHES (continued)

### GENERAL INFORMATION

- The Japanese had placed concrete blocks, tree stumps and other obstacles to create problems for the LVTs coming ashore. They had also placed close to 500 mines (actually rigged airplane bombs) along the stretch from the reef, but most of the wires connected for remote detonation were severed during the 3-day bombardment.

- The different beaches of Peleliu received their "colored" names as codenames and not for any other specific reasons, even though local claims may be different.

- The Japanese had setup defenses facing many possible invasion beaches but anticipated the invasion on the South-West end so defended it the most heavily.

~12:40am (Lunch: 30-40mins)

PRIORITY: **MUST**

## SOUTH DOCK



Most of the remains of Peleliu's South Dock that you can still see today are remains of what the Americans had built in the time of the war. The Americans were the one's who built the South Dock so they'd be able to allow their different boats full of supplies outside the reef to get all their necessities on to land, as well as ship out injured soldiers. The dock was built quickly and used heavily.

The plan by the US was to secure the southern part of the island as quickly as possible after invading the beaches so that supplies can safely reach land from the ocean. The Americans quickly setup this dock and widened the channel to allow vessels into the area.

### PRECAUTIONS

It is okay for customers to wander around after lunch, but just watch out for the rocks at the southern point as huge waves can crash up against them causing dangerous spouts of water

~12:25pm (5mins)

PRIORITY: **HIGH**

## D-DAY INVASION BEACHES

Peleliu's invasion beaches consisted of Orange Beach 1,2,3 and White Beach 1,2. These beaches were chosen for the strategic purposes such as the length of the beach (3.2kms), their proximity to the airfield and the ability to secure a southern portion of the island in the shortest time possible.

At 08:32am Sept. 15th, D-Day, American forces made their way from the barrier reef on to the beaches. The shores had been so heavily bombed and attacked by the Americans prior to the landing that they believed it would have been nearly impossible for any Japanese forces to have survived. After the first wave of American LVTs easily climbed the beaches, a huge amount of counterattack from the Japanese forces started to rain down. Hidden artillery from the ridges were devastating tanks, LVTs and soldiers as they tried to get on the beaches. The Americans had spent 3 days straight bombing the entire southern part of the island and targeting concrete structures, but had barely even scratched the Japanese actual defenses hidden inside the caves.

Once the Americans had realized that they had not been attacking the proper targets, they had already suffered heavy casualties. The Americans planned on getting somewhere close to 8,000 troops on the beach



in the first 45 minutes of the invasion. With the congestion of soldiers on the beaches, there was mass confusion as things weren't going as planned. The American boats saw the explosions from the Japanese attacks on the shores but did not know where they were coming from. The first several hours after the beach landing were spent hiding from Japanese artillery and preparing for stage two of the beach invasion; securing the southern section of the airfield.

Within the first 3 days there were over 3,000 casualties, with almost half of them being due to heat exhaustion and dehydration and sickness from contaminated water collected from used oil-barrels.

### NOT-SO-FUN FACT !!

The most Northern point of the invasion beach, White Beach 1, was an area called the point where the Americans fought the Japanese in raised coral ridges and caves similar to Bloody Ridge. The US suffered many casualties and fought the entire day and night on the beach area before moving on.

## JP MACHINE-GUN POST

Positioned facing Ngesebus island, close to North Dock and off a the western wall of the Umurbrogol Mt. range. This machine gun post would have provided very little defense from American forces which invaded from the south. It appears as more of a lookout in the case of a Northern beach invasion and has relatively little damage besides the big opening from a bomb on the North end of it.



## JP CAUSEWAY / MINING

These pillars are the remains of the causeway which once attached Peleliu to Ngesebus. The purpose of this causeway was to allow easy transportation of supplies to and from the island. Ngesebus had an airstrip under construction and was also used for **ammunition** storage.

### - Mining -

Peleliu and more primarily Angaur where originally used for mining purposes, with their natural **phosphate** deposits on the islands which play a very important compound in production of fertilizer.

Mining is what first brought occupation to both of these southern islands and was originally



established during the German occupational era.

Much of the mining operations and physical work would have been carried out by Korean workers and some of the Japanese Navy forces.

### FUN FACTS !!

The Americans first believed that 1000 man cave was first used for phosphate mining due to its size and complexity (and proximity to the mine docks themselves).

~11:00am

PRIORITY: **HIGH**



## MAIN TOWN

Peleliu's development, much like that of Angaur and states around Babeldaob was due to the opportunity to use the land for mining or farming.

Over the 30 years of Japanese occupation, many men started families or brought their families over to Palau. This led to the need for development of public facilities and housing to support the workers families.

Peleliu's main-town is no more than 2km North of White Beach and was the target of bombardment from many US Navy ships and airplanes.

The original town that existed was mostly destroyed as the Americans bombarded it, however many families of the workers or the workers not suited for combat fled to Koror or Babeldaob before the actual invasion of Peleliu on Sept 15th 1944.

**PRECAUTIONS**

Don't forget to pick up your state permits here!

The government office is closed on Sundays so please ask the Museum



## PALAU ELEMENTARY SCHOOL

The current elementary school was setup for local Palauans shortly after Americans had seized the island and started rebuilding it.

The only part that remains of the original school are the two, recently painted gateposts at the entrance of the school. These are remainders of the original all-Japanese elementary school first built.

### FUN FACTS !!

During the months before the Americans came to invade Peleliu island, most of locals from Peleliu were evacuated to Airai State and to some neighboring islands were the battle wasn't taking place.

~12:15pm

PRIORITY: **MED**

## JP TYPE 95 "Ha-Go"

This Japanese tank was manufactured by Mitsubishi and was the most produced tank by the Japanese during WWII. Its operational years were from the mid 1930's to the end of WWII. It was used throughout Asia and the Pacific and was an effective tank in the campaigns throughout Asia. In the Pacific islands and as the war progressed they began to lose their superiority and were overpowered by most US Tanks.



In Peleliu specifically, there were an estimated 15 tanks that arrived here from an army division previously situated in Northern China (**Manchuria**). All 15 tanks charged down Peleliu's airstrip in the afternoon of the D-Day invasion and broke through American lines. The tanks ended up being surrounded by all sides and had no specific targets to fire on and quickly became the target for the Americans on all sides of them. All tanks were destroyed in that single occasion in Peleliu. Some, like this tank, didn't even make it down the runway.

- MITSUBISHI**  
Type 95 'Ha-Go' Light Tank (kyuugo-shiki kei-sensha)
- Weight:** 15,000lbs / 7000kg  
**Weapons:** 37mm Turret  
2 x 7.7mm MG  
**Engine:** 6-cylinder  
120hp  
14.4L  
**Max Speed:** 45km/h

## PELELIU'S AIRSTRIP

The main purpose of the invasion of Peleliu by the US was to secure the two airfields that were here. In the afternoon of the D-Day +2 invasion on Sept.16th, the American soldiers rushed eastward across the open airfield in attempts to secure the southern part of Peleliu island. With many US casualties, it was a success by the evening of the 2nd night to control the southern part of the island.



After most of Peleliu was secured and the battle continued in the Umurbrogol Mts. the Americans fixed up the runway and used it to take planes off and bomb Peleliu as well as attack other of the islands in Palau.

The airstrip is still used today, is approx. **1 1/2** km long and the other one that was lost was just about 1km long.



## JP POWER PLANT

This was 1 of 3 power plants similar to this setup in Peleliu. The other 2 may have been completely destroyed or lost to the jungle. Diesel fuel was used for energy. This was one of many buildings in this area but one of the only ones remaining because it was built of such strong material. There are missing parts of the building which show how much battle was endured in the area.

~12:00pm (10-15mins)

PRIORITY: **HIGH**



## JP NAVY HQ

Officers from the Japanese NAVY stationed in Peleliu would use this building as their main facilities. The building was two floors tall and was mostly open to the outdoors. The balcony on the front of the building, 2nd floor was facing out towards the airfields now which you can't see with the overgrown jungle.

The building itself and many other concrete structures setup built by the NAVY were nearly identical to other concrete structures around Micronesia, all following the same design.

Peleliu had been occupied for a long time for mining purposes and for the expansion of the **Japanese Empire**.

### GENERAL INFORMATION

This headquarters building was built in the early 1920's, prior to the construction of the airfields (which were between 1937-1941). The same architecture/design was used for other NAVY HQ such as on Tinian Island.



#### PRECAUTIONS

If you feel like venturing inside the **bombshelter**, don't forget to bring enough flashlights

The time here is pretty short usually, make sure you have told your group to explore the whole place in the given time frame

~11:10am (10mins)

PRIORITY: **MED**



## PELELIU CEMETARY

The cemetery is the main burial site for locals of Peleliu but also has a memorial / grave setup for the Japanese who fought and were lost in the battle.

If you'd like to get the information on the significance of all the different stones and their meanings, it would be best to talk to one of our Japanese staff and gradually build your knowledge of their significance.

Memorials represent the many lives that were lost in battle in Peleliu and Angaur. Japanese customers joining the tour will have a memorial ceremony where they will light incense and have a moment of silence and bow to honor all those who took part in Peleliu, the Palaus and the Pacific Theatre.



#### PRECAUTIONS

If there are any Japanese customers present, the stop at the cemetery is necessary

If there are only English speaking customers then there is no important reason to stop and descend at the cemetery

Do not pressure customers to participate if they seem reluctant as it may offend their religion, culture or beliefs.

### GENERAL INFORMATION

It is not necessary for English customers to join in the ceremony with the incense, as it is of Japanese culture. However it may be something they are willing to try if you explain the significance of the ritual and how it universally applies. If you don't want them to feel awkward or pressured then explain and demonstrate what to do. Also do not pressure them to participate if they seem reluctant as it may offend their religion, culture or beliefs.

### FUN FACT !!

Some of the tombstones in the cemetery have dive tanks around them! A number of other graves are using Airplane propellers from WWII as their tombstone. The material for the propeller is military-grade aluminum and if polished can still be of perfect use. A typical large prop such as in the graveyard can sell for \$50-\$100 in some metal scrap yards.

# JAPANESE POST-WAR HOLDOUT

This sign is setup some 30m from a cave that the last of a total of 34 Japanese soldiers stayed in hiding for almost 3 years after the battle of Peleliu had already been over.

Their presence remained mostly a mystery to the small remaining American forces (150 marines) on the island, however it was locally known amongst some Palauans that they've sighted some Japanese around doing fishing and gathering some resources. The 34 Japanese soldiers, lead by Ei Yamaguchi, had a fair amount of firepower stowed away in their hideouts.

Many similar-style holdouts were emerging throughout other Pacific Islands and South East Asia after the war had already ended.

With some of the local Palauans relaying information of Japanese around Peleliu and with obvious signs such as American food supplies going missing, it had become clear there may still be a presence of Japanese soldiers on the island. The American forces at this time went on high-alert as they feared a final attack or charge by the Japanese troops in hiding, as this had been happening in other of these holdouts in the Pacific.

American troops started to put hundreds of flyers translated to Japanese around the area in which they thought the soldiers where, claiming that the War was over and it was okay to sur-



render. The soldiers didn't surrender immediately but one of them was captured by the Americans.

The Americans (with assistance from a superior/high ranking officer of the Japanese Military) managed to convince the remaining soldiers to surrender peacefully. The plan was to contact families, friends and comrades of the Japanese soldiers and get hand-written notes from them to convince the soldiers the War had ended. The Japanese forces received the letters as well as the orders from their superior officer and surrendered peacefully.

## DOUBLE FUN FACT!!

Some of the Japanese soldiers of these Post-War Holdouts went uncaptured for almost 30 years, with the last soldier being captured in Guam in 1972!

For the Japanese soldiers to occupy their free time, sometimes while sneaking out to steal food supplies from Americans at night time they would hide outside in the dark and secretly watch the Hollywood movies behind the backs of the Americans.

~11:30am (30mins)

PRIORITY: HIGH

# PELELIU MUSEUM

Situated not far from White Beach is a 2.5-foot-thick concrete structure built by the Japanese which is now the site of Peleliu's one and only museum. It was used for ammunition storage for the resident Japanese Navy and was emptied before the battle.

This museum includes many photos and written accounts in English and has some of Peleliu's most interesting and well preserved artifacts.

There is enough information in here for you to always learn something new about Peleliu if you try to read and understand something different every time.

## GENERAL INFORMATION

This building was made in the early 1920's and much like the other buildings around Peleliu was not built for exactly 'war purposes'.

Note that inside the building, there are bullet holes and marks all over the walls and ceiling. As explained on the write-up for building inside the museum, securing this museum was not easy and resulted in numerous American **casualties**.

It is also known that American soldiers occupied this building after capturing it and used it as a temporary first-aid station, to provide shelter from Japanese fire.



## PRECAUTIONS

Remind customers not to pick up or move any artifacts

As of 2014, Cameras are allowed however flash is not permitted

Inform your customers of how much time you will be spending in the museum. Update them on remaining time shortly before leaving

## FUN FACT !!

The founder of this museum is an American that lived in Peleliu for many years, collecting artifacts locally as well as many original photos, notes and information of the soldiers who were part of the Battle of Peleliu. He abandoned his work on the museum in 2014 out of frustration after running into too many conflicts with the local Peleliu government over ownership and regulations over the museum and its material.